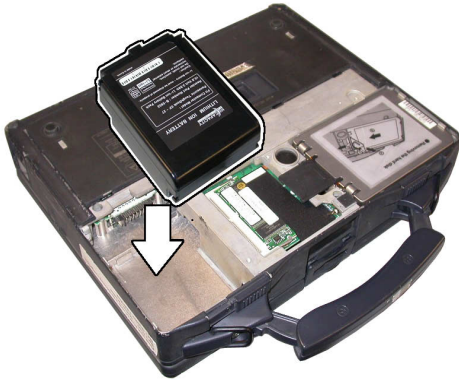




Panasonic ToughBook 27 Battery Installation

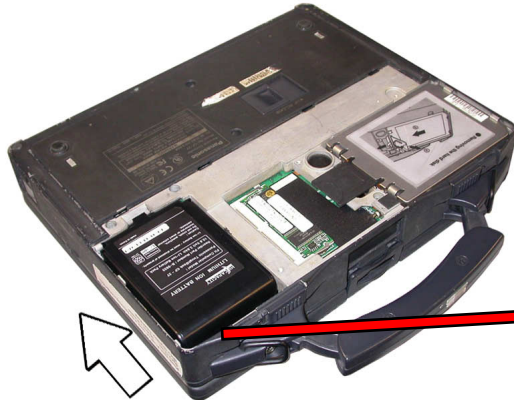
Step 1

Insert the battery into the laptop cavity.



Step 2

Push the battery into place following the direction of the arrow as shown. Be sure the laptop's contact pins fit into the battery's contact slits. The battery should slide approximately 1/2" forward and snap into place.



Note: There should be a gap on this side of the battery compartment after pushing the battery all the way in.