

Universal Laptop Battery User's Manual

www.Hi-Capacity.com



Table of Contents

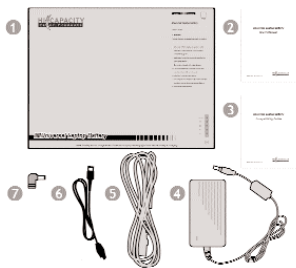
1. Introduction	2
2. Safety Precautions	3
3. Usage Instructions	4
Before Use	4
Charging the Battery	5
Reading the Fuel Gauge	8
4. Specifications	10
5. Manufacturer's Warranty	10

1. Introduction

Congratulations on your purchase of the Hi-Capacity™ Universal Laptop Battery. This battery has been designed for mobile laptop users who need maximum work time from their computers. Advanced Lithium Ion technology provides a long lasting power source when you have no access to an AC/DC power outlet. The battery is constructed using the highest quality components and utilizes all of the proper logic boards, thermal protectors and circuit breakers to ensure safety and reliability. For optimal performance and safety please read the following instructions carefully before using the Universal Laptop Battery.

Box contents include:

1. Universal Laptop Battery Pack
2. User's Manual
3. Compatibility Guide
4. AC Adapter
5. AC Adapter Cord
6. Output Cable
7. Smart Tip(s)



If any of these items are missing please contact the retail dealer from which you purchased the Universal Laptop Battery.

2. Safety Precautions

When used under normal conditions the Universal Laptop Battery is a safe alternative energy source to AC/DC power. However, misuse of the battery can lead to leakage of toxic fumes or in extreme cases, explosion or fire. Before use, please read the user's manual in its entirety. It is very important to follow the instructions carefully to avoid potentially hazardous situations.

- Use only with laptop computers specified in the Universal Laptop Battery compatibility guide.
- Use the compatibility guide to identify the correct Smart Tip for your laptop. Do not use a tip different than the one specified. If you have any questions or need assistance please contact the retail store from which you purchased the Universal Laptop Battery.
- Only use the Smart Tip, AC adapter and output cable that accompanied the battery when originally purchased.
- Do not attempt to disassemble, puncture, throw, drop, crush, bend, modify or incinerate the battery.
- Avoid contact between the battery and metal objects. Contact with metal objects may cause the battery to short-circuit.
- Do not insert foreign objects into the battery's charging or output ports.
- Do not expose the Universal Laptop Battery to heat above 140°F (60°C).
- Do not expose the Universal Laptop Battery to water or any other liquids.
- Do not charge the battery while on an airplane.

- Store the Universal Laptop Battery in a cool dry area.
- Do not discard the Universal Laptop Battery in the trash. Follow all local environmental regulations for recycling.
- Keep the battery away from children.

In Case of Emergency

- In case the contents of the battery come into contact with the eyes, flush eyes with water and immediately seek medical attention.
- In case the contents of the battery come into contact with any exposed skin, flush with soap and water and immediately seek medical attention.
- In case of inhalation of fumes resulting from a leakage in the battery, leave the area immediately and seek medical attention.
- In case the battery's contents are ingested, drink water to dilute the battery material and seek immediate medical attention. DO NOT induce vomiting.

3. Usage Instructions

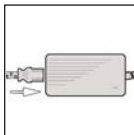
Before Use

Check the remaining capacity of the Universal Battery by pushing the fuel gauge indicator button located on the lower right portion of the battery. The LEDs on the fuel gauge indicate the remaining capacity of the Universal Battery. Once the button is pushed and the capacity is indicated, the LEDs

will turn off after 5 seconds. If the LEDs do not light up the battery is completely depleted and needs to be charged using the AC adapter. The Universal Laptop Battery is shipped with a minimal charge and will need to be fully charged before use.

Charging the Battery

WARNING: Use only the AC adapter provided with the Universal Laptop Battery.



Step 1:

Connect the AC adapter's cord into the AC adapter and the plug-end of the cord into an AC wall outlet.



Step 2:

Insert the AC adapter plug into the charging port of the Universal Battery (it is recommended to have the output cable detached from the battery during charging).



Step 3:

Let the Universal Laptop Battery charge for approximately three hours until fully charged. When normal charging is in progress the LEDs on the fuel gauge will display a green blinking signal. When all

of the LED's display a constant green signal the battery is fully charged (refer to "Reading the Fuel Gauge" section for more information on fuel gauge operation). **The battery will not charge when the output cable is connected to the laptop.**

WARNING: *If the fuel gauge panel displays a blinking red signal during charging immediately disconnect the AC adapter plug from the Universal Laptop Battery to stop the charging process. After a few seconds reconnect the AC adapter plug to the battery and attempt to charge. If the problem persists discontinue use of the battery and contact your dealer for further assistance.*

Choosing the correct Smart Tip for your laptop computer

The Universal Laptop Battery includes a variety of Smart Tips to ensure compatibility with most laptop brands and models. Use the included Compatibility Guide to select the correct Smart Tip for your laptop model. If your model is not listed contact your local dealer to verify whether the battery works with your laptop.

Note: Some models on the Universal Battery include only one Smart Tip plug to be used with the specific laptop for which the battery was purchased. Additional Smart Tips can be purchased from your local dealer.

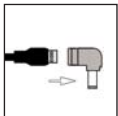
WARNING: *Do not use the battery if your laptop model is not*

listed in the compatibility guide. Use of the incorrect Smart Tip may damage your laptop computer or cause it to malfunction!

For the most current Smart Tip compatibility guide, go to www.Hi-Capacity.com/compguide

Step 1:

Use the Compatibility Guide to select the correct Smart Tip for your laptop computer. Each Smart Tip is clearly numbered. Select the correct Smart Tip based on the Smart Tip specified in the compatibility guide.



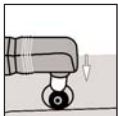
Step 2:

Connect the selected Smart Tip to the end of the output cable. The arrows on the two pieces should meet.



Step 3:

Insert the other end of the output cable into the output port of the battery.



Step 4:






Insert the Smart Tip into the AC adapter port of your laptop computer where the AC adapter would normally connect.

Step 5:

Turn on the laptop and begin working.

Reading the Fuel Gauge

The Universal Battery has a five step fuel gauge panel to indicate charging status and remaining capacity. The fuel gauge is located in the lower right corner of the Universal Battery and consists of 5 LEDs. Push the “check” button to determine the batteries remaining capacity.

Fuel Gauge:					
LED	1 Green	2 Green	3 Green	4 Green	5 Green
Remaining capacity	0-20%	20-40%	40-60%	60-80%	80-100%

General Operating Instructions

Temperature

WARNING: Only use the Universal Laptop Battery in ambient temperatures that do not exceed 130°F (54.4°C). It is normal for the battery to become warm during use. For precautionary measures the battery may shut down temporarily if it reaches a temperature of 140°F (60°C). The battery will resume normal operation once it has cooled off sufficiently. Avoid placing the battery in direct sunlight, next to heat sensitive materials or in automobiles that may reach extreme temperatures. Do not charge or use the Universal Battery in temperatures in excess of 130°F (54.4°C). When the battery is hot do not charge it until it cools.

If the Universal Laptop Battery becomes hot and the LEDs display blinking red lights, disconnect the output cable from the laptop immediately. Wait until the battery cools before re-attaching the output cable and resuming use. If the Universal Laptop Battery is not hot and the LEDs display red blinking lights during use, power the battery with the AC adapter for 1 minute. If the red lights continue to be displayed contact your local dealer for further assistance.

Low Battery Warning

Prior to exhausting the battery's power supply a warning beep will sound notifying you to shut down the laptop or find an alternative power supply. If the laptop's original internal battery is inserted the laptop will automatically switch to that battery without interruption.

Run-Time

The Universal Laptop Battery provides power in a manner similar to that of an AC adapter. If there is an internal battery in the laptop during use, the Universal Battery will simultaneously power the laptop and charge the internal battery. This additional power drain will lower the actual run-time of the Universal Laptop Battery. However, your laptop will now have additional run-time available from the fully charged internal battery pack.

To exclusively use the Universal Battery to power the laptop and receive maximum run-time, remove the internal battery (*if your laptop will continue to run without an internal battery*)

or make sure the internal battery is completely charged before use. A defective internal battery may deplete the Universal Laptop Battery without retaining the transferred power in its cells.

4. Specifications

	B-5755	B-5760
Max Capacity	95Wh	140Wh
Output Voltages	16V,20V	16V, 20V
Fuel Gauge	5 step LED	5 step LED
Run Time	up to 7 hours	up to 10 hours
Charging Time	approx. 3 hours	approx. 4.5 hours
Dimensions	11.25" x 8.5" x 0.5" (290 x 220 x 12mm)	11.25" x 8.5" x 0.5" (290 x 220 x 12mm)
Weight	2.65lbs. (1.1kg)	3.5lbs (1.6kg)
Adapter	19V, 60W AC/DC	19V, 60W AC/DC

5. Manufacturer's Warranty

The Universal Laptop Battery is warranted to be free from defects in material and workmanship for a period of six months from the date of purchase. This guarantee excludes defects or damage due to misuse or neglect. Batteries which are deemed defective and are within the warranty period will be repaired or replaced at the manufacturer's discretion. If you have any questions regarding the manufacturer's warranty or if you wish to return a defective battery please contact the dealer from which the battery was purchased.

Limitation of Liability - Under no circumstances will the manufacturer be responsible for incidental or consequential damages, loss of software, data, records or damage to the laptop computer itself. All damages are limited to the value of the purchase price of Universal Laptop Battery.